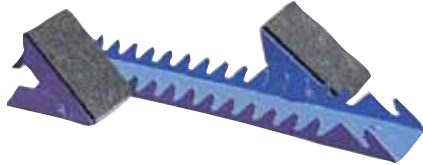


Starting blocks

SCHOOL STARTING BLOCKS

A1360

Basic model. Very functional for schools and training clubs. Steel manufacturing. Central rack with adjustable pedals synthetic covered. 2 blocks with different inclines for front and back foot. Spikes under rack. Handles integrated to the rack for transportation. 2 inverted notches to hang pedals foot transportation. Unit.

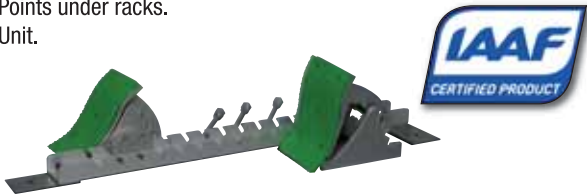


COMPETITION STARTING BLOCKS

A1355

IAAF CERTIFIED.

Aluminium rack. 80cm length central rack in T shape. 2 adjustable pedals, 4 different inclines, synthetic covered. Points under racks. Unit.

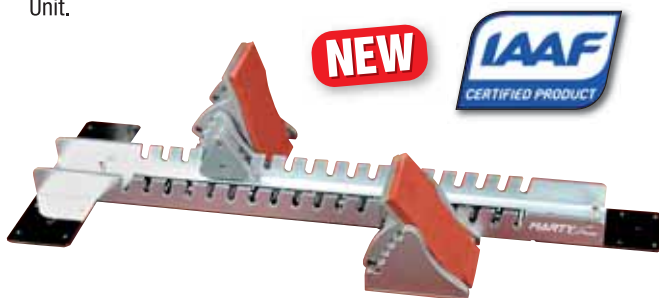


STARTING BLOCKS HIGH COMPETITION

A1359

IAAF CERTIFIED.

NEW model HIGH COMPETITION but ideal for all competition levels. Entirely in cast aluminium central rack and blocks; Big rack width 10cm, length 90cm strengthened with T shape fastener. Very wide Blocks 12cm and very high 20cm allowing pushing the maximum on it, Synthetic cover. Adjustable in 5 steps inclination. Unit.



LOUDSPEAKER SYSTEM

A1315

For wide stadium. Allows linking between starter and athletes. Complete starter's loudspeaker device. Composed of:

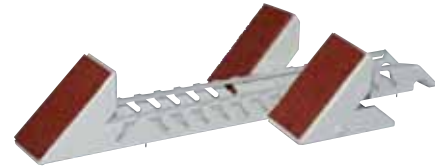
- 1 amplifier.
- 1 microphone.
- 8 Loudspeakers .



CLUB STARTING BLOCKS

A1365

Especially manufactured for our Mini-Stadium « Récré Athlé », for athletic clubs and schools. Central rack finished with a fixed front pedal that is combined with 2 others adjustable pedals and avoids adjustment for the changing of the front foot. 3 pedals covered with synthetic. Spikes under rack. Handles integrated to the rack for transportation. Unit.



STARTING BLOCKS RACKS

A1346

MODEL very practical and compact For transport of 10 competition starting blocks with racks. Welded steel tubes, electro galvanised finishing- mounted on 4 wheels Ø 160mm among which 2 are pivoting. Articulated handle for traction makes the rack very easy to drive. Unit.



STARTER'S PODIUM

A1300

2 steps simple model. Steel frame. Varnished plywood floor. Fitted with wheels for easy moving. Shelf. Unit.



RUNNING

JUMP

THROWING

TRAINING